

Cortes Forest General Partnership

Ruby Carrico

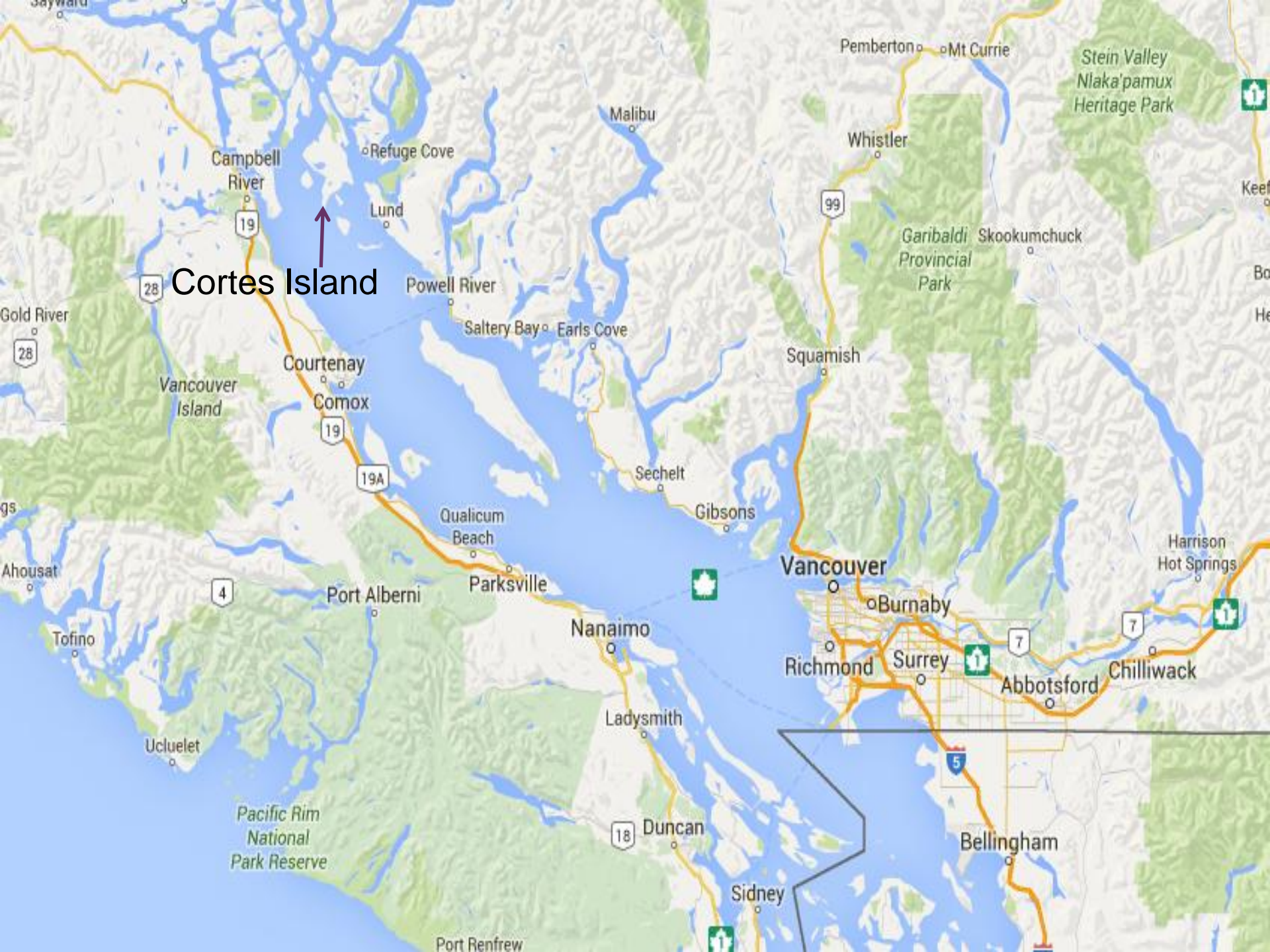
+ Outline



- Who am I
- Who are the Cortes Forest General Partnership
- Work conducted
- Deliverables
- Fun stuff!



Who am I?



Cortes Island



Campbell River

Refuge Cove

Lund

Powell River

Saltery Bay

Earls Cove

Courtenay

Comox

19A

Qualicum Beach

Parksville

Sechelt

Gibsons

Vancouver

Burnaby

Richmond

Surrey

Abbotsford

Chilliwack

Port Alberni

Nanaimo

Ladysmith

18

Duncan

Sidney

Bellingham

Pemberton

99

Mt Currie

Whistler

Stein Valley
Nlaka'pamux
Heritage Park

Garibaldi Skookumchuck
Provincial
Park

Vancouver
Island

4

Tofino

Ucluelet

Pacific Rim
National
Park Reserve

Port Renfrew

Harrison
Hot Springs

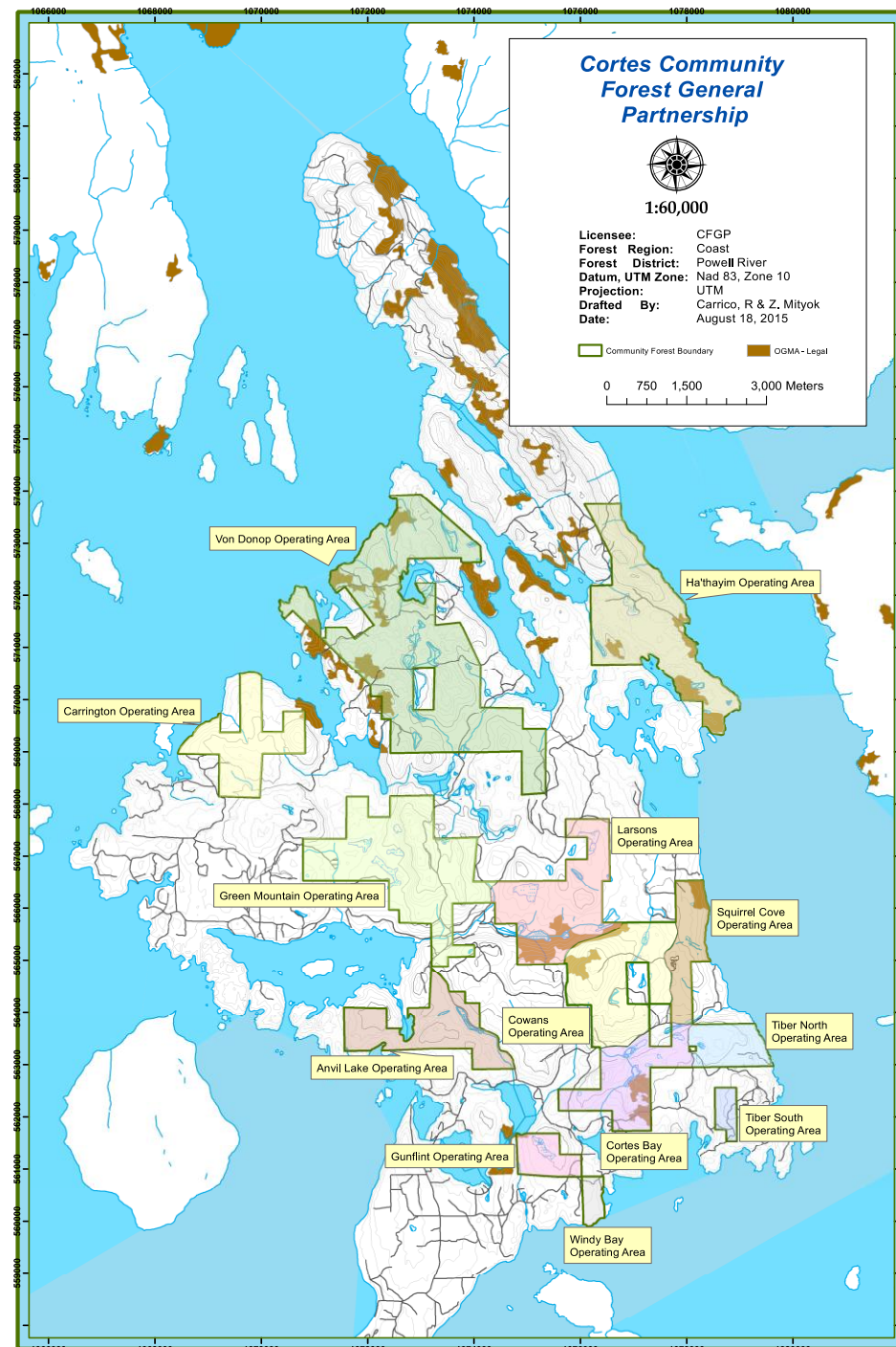
Keef

Bo

He



Cortes Forest General Partnership





Work Conducted



HW 0421



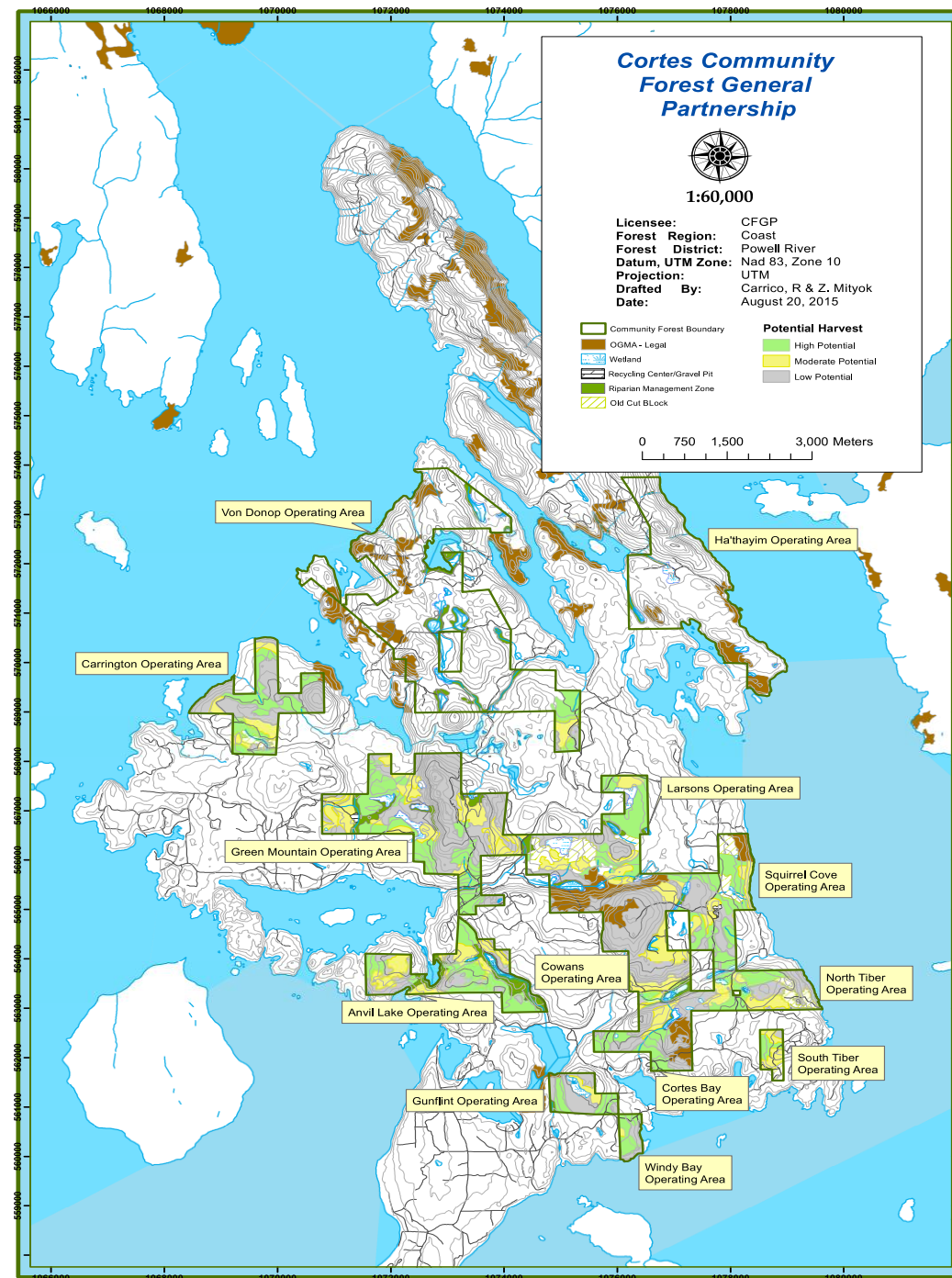






Deliverables

- Maps and reports (including total chance of harvest) for all 13 operating areas within the Cortes Community Forest



1072000

1074000

Cortes Community Forest General Partnership

Anvil Lake Operating Area



1:10,000

Licensee: CFGP
Forest Region: Coast
Forest District: Powell River
Datum, UTM Zone: Nad 83, Zone 10
Projection: UTM
Drafted By: Carrico, R & Z. Mityuk
Date: August 18, 2015

Potential Harvest

- High Potential
- Moderate Potential
- Low Potential

Community Forest Boundary

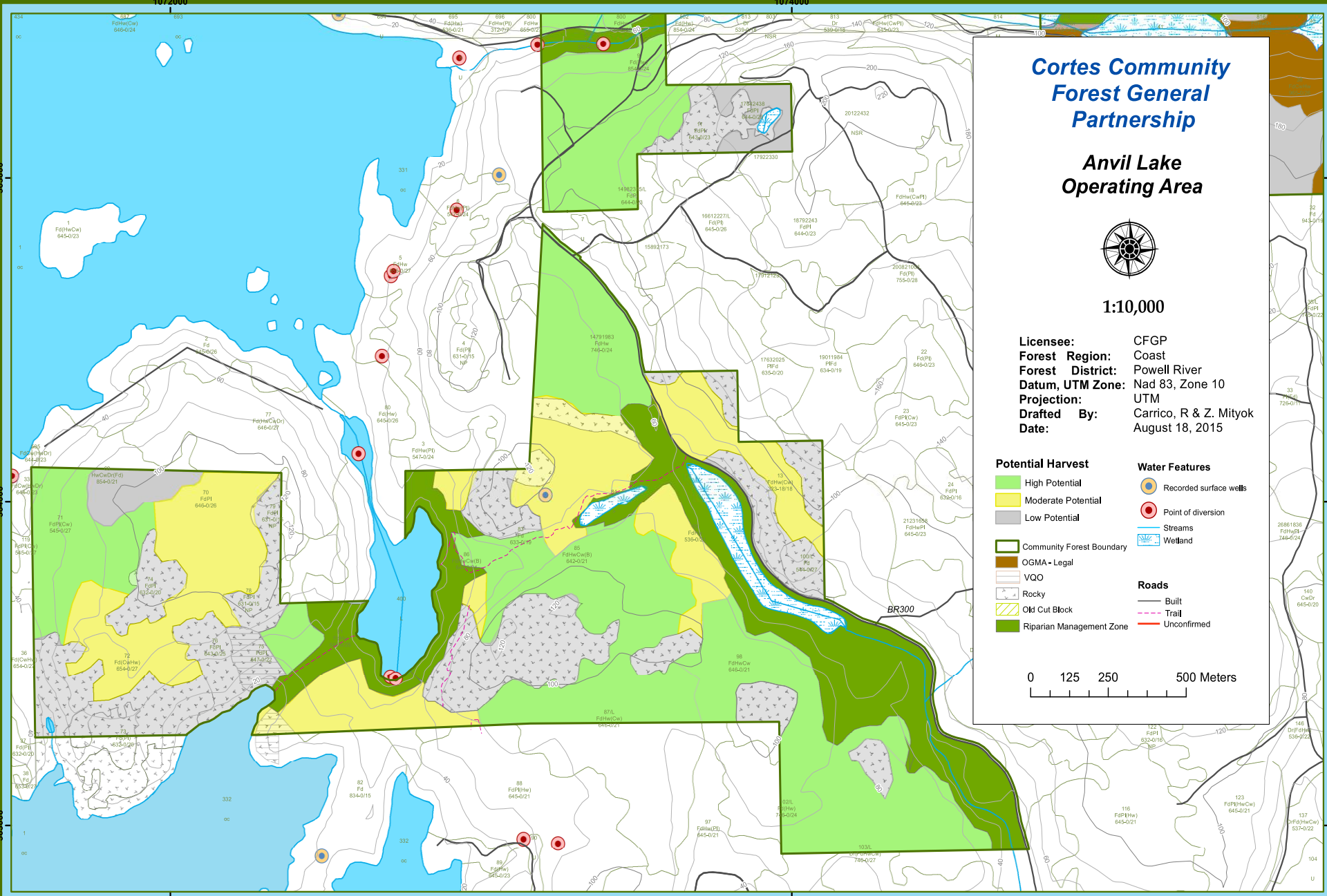
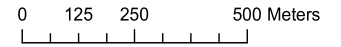
- Community Forest Boundary
- OGMA - Legal
- VQO
- Rocky
- Old Cut Block
- Riparian Management Zone

Water Features

- Recorded surface wells
- Point of diversion
- Streams
- Wetland

Roads

- Built
- Trail
- Unconfirmed



Cortes Community Forest General Partnership

Larsons Meadow Operating Area

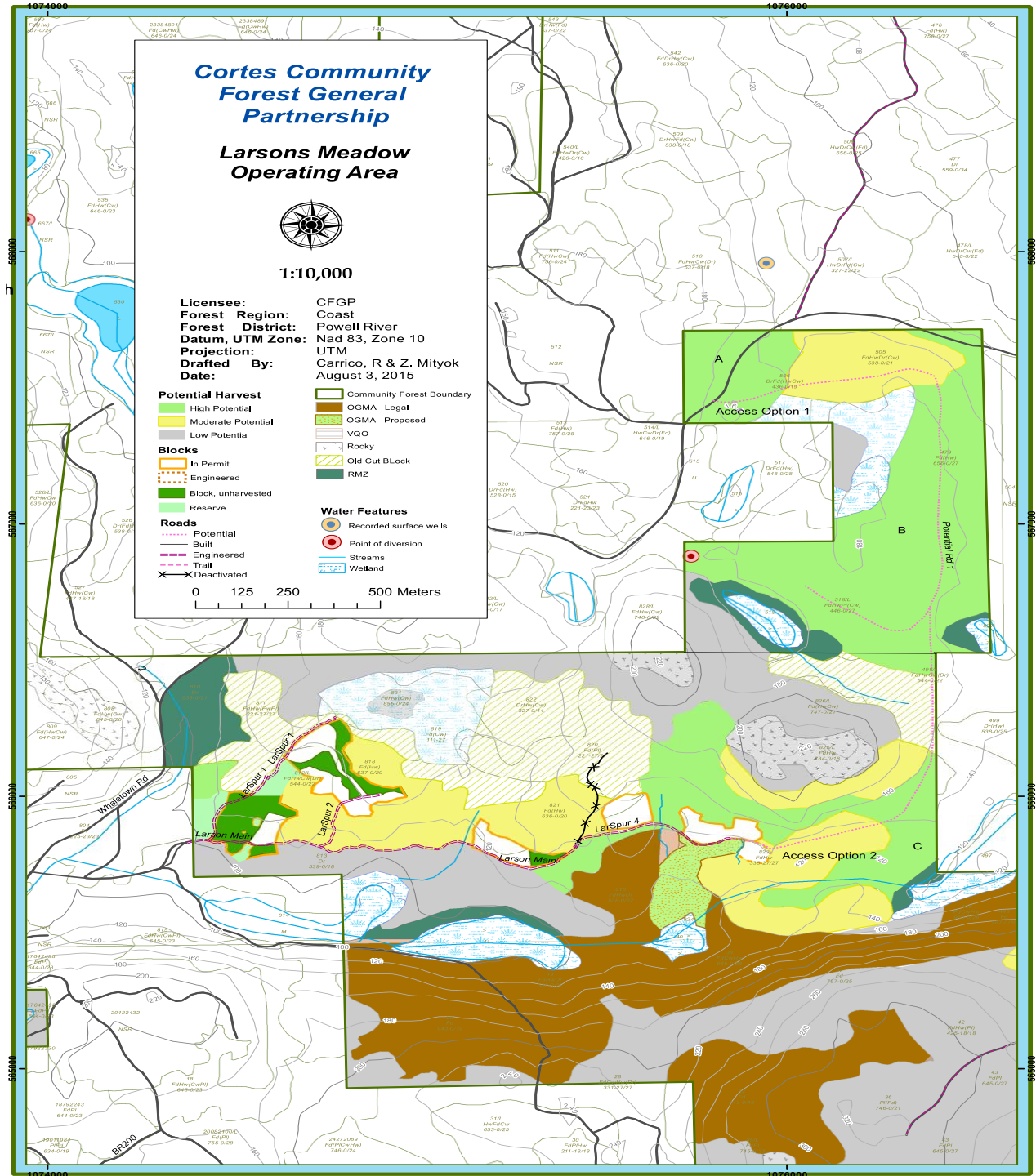


1:10,000

Licensee: CFGP
Forest Region: Coast
Forest District: Powell River
Datum, UTM Zone: Nad 83, Zone 10
Projection: UTM
Drafted By: Carrico, R & Z. Mityok
Date: August 3, 2015

- | | |
|--------------------------|---------------------------|
| Potential Harvest | Community Forest Boundary |
| High Potential | OGMA - Legal |
| Moderate Potential | OGMA - Proposed |
| Low Potential | VGO |
| Blocks | Rocky |
| In Permit | Old Cut Block |
| Engineered | RMZ |
| Block, unharvested | Water Features |
| Reserve | Recorded surface wells |
| Roads | Point of diversion |
| Potential | Streams |
| Built | Wetland |
| Engineered | |
| Trail | |
| Deactivated | |

0 125 250 500 Meters



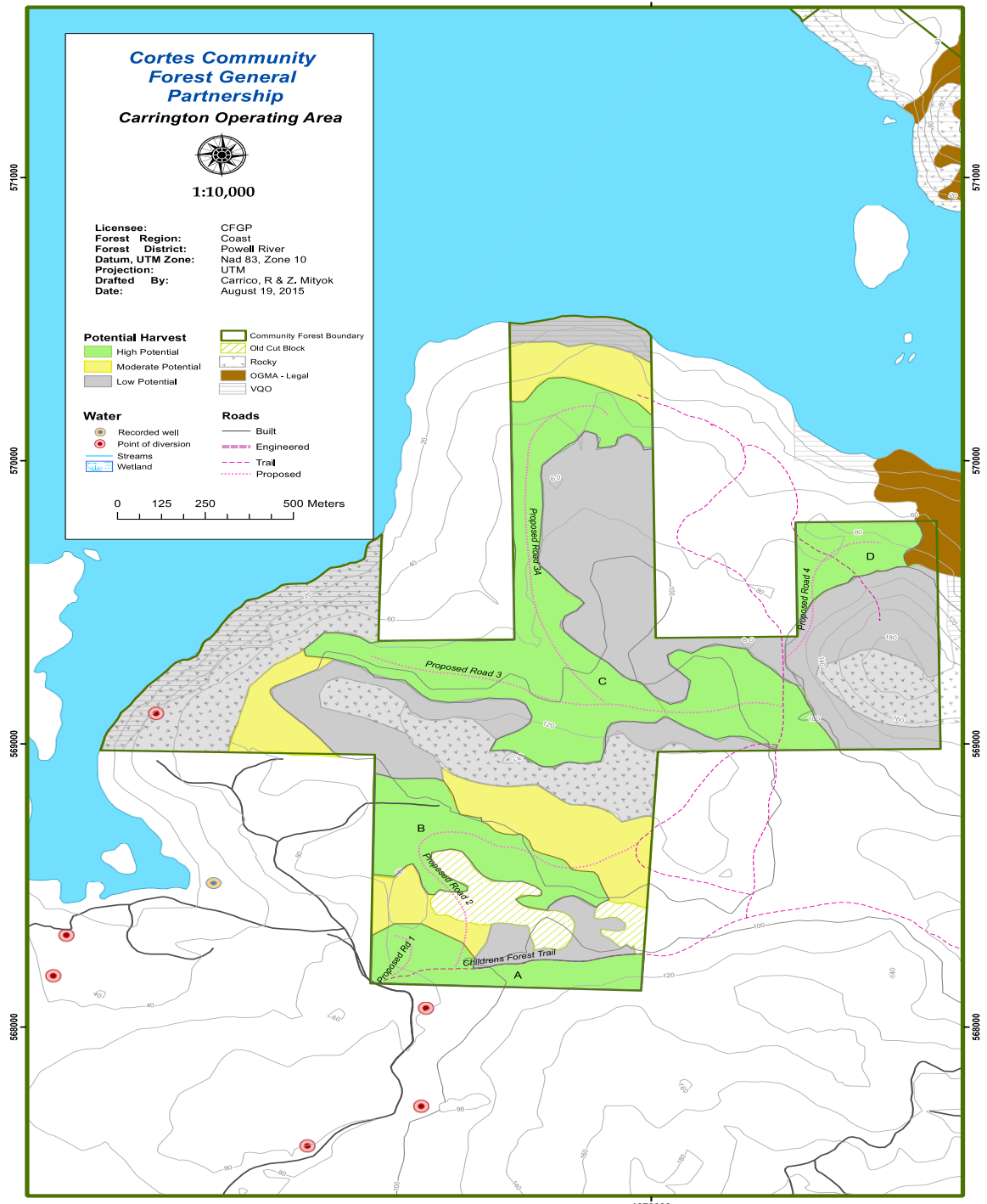
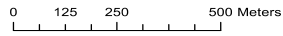
**Cortes Community
Forest General
Partnership
Carrington Operating Area**



1:10,000

Licensee: CFGP
Forest Region: Coast
Forest District: Powell River
Datum, UTM Zone: Nad 83, Zone 10
Projection: UTM
Drafted By: Carrico, R & Z. Mityok
Date: August 19, 2015

- | | |
|--------------------------|---------------------------|
| Potential Harvest | Community Forest Boundary |
| High Potential | Old Cut Block |
| Moderate Potential | Rocky |
| Low Potential | OGMA - Legal |
| | VQO |
| Water | Roads |
| Recorded well | Built |
| Point of diversion | Engineered |
| Streams | Trail |
| Wetland | Proposed |





Everything Else!












A misty landscape featuring a calm lake in the foreground, a dense forest of evergreen trees on a hillside in the middle ground, and a hazy sky. The scene is framed by dark foliage in the bottom and left corners. The text "Questions?" is centered in the upper half of the image.

Questions?