



Klahoose First Nation

CORTES FORESTRY

GENERAL PARTNERSHIP



July 20, 2016 – Community Meeting – Klahoose Hall

- Summary of 2016 Squirrel Cove Operations
- Fall 2016 / Spring 2017 Operating Plans
- Peter Schmidt / Ron Wolda Community Forest Business Centre Proposal

2016 Squirrel Cove Summary

Harvest Volume (est): Local Sales	= 638m ³	
Coastland (Nanaimo)	= 230m ³	(6 loads)
Howe Sound	= 3160	(81 Loads)
Firewood	= 600m ³	(based on 2015 harvest)
Residue and Waste	= 100m ³	

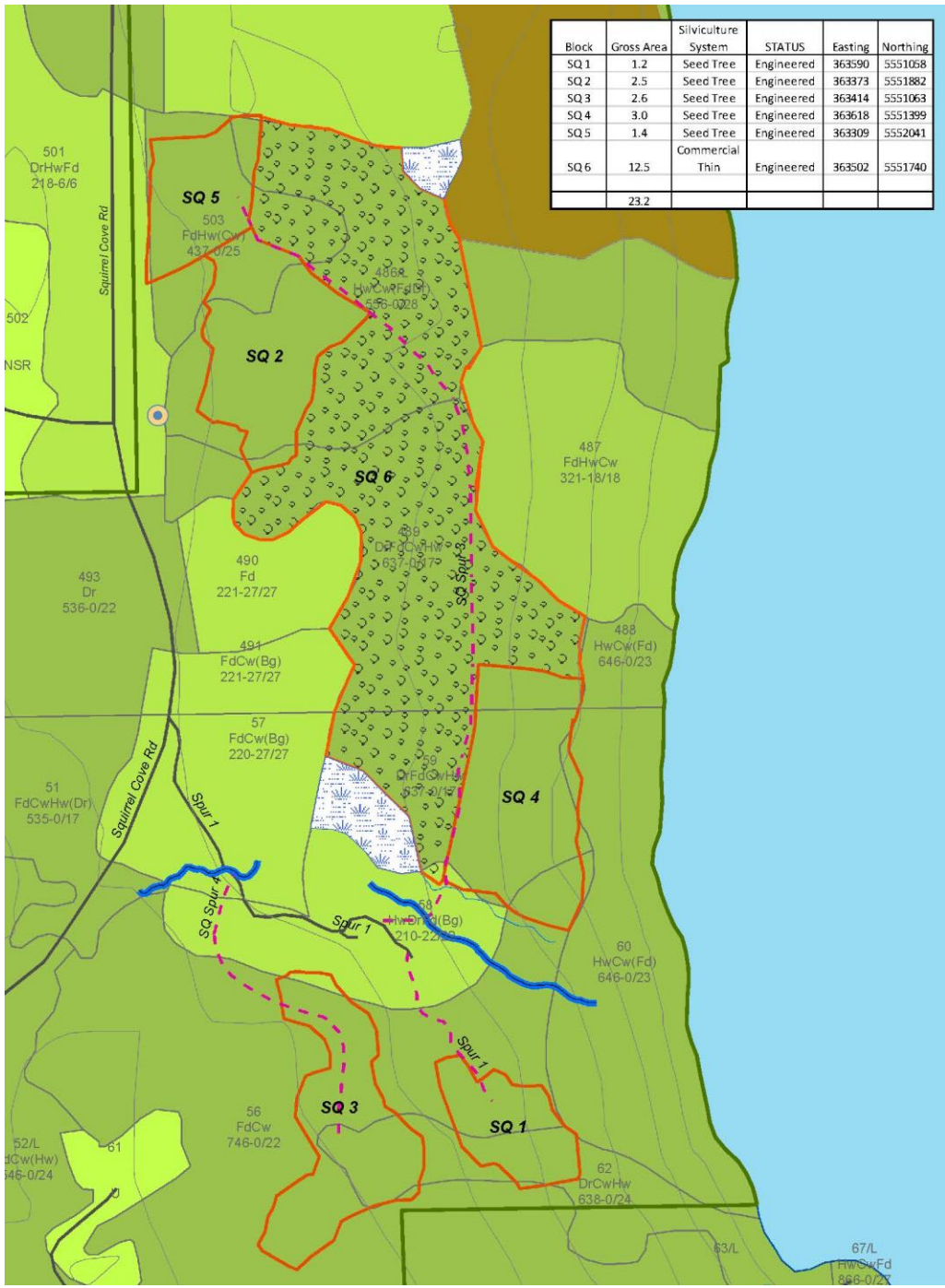
Total Harvest (2016 Cut Control Volume) = 4700m³ +/-

Log Scaling happening today at Howe Sound. Actual Volume and species composition will be available July 25.

Area Harvested:	SQ1	1.2ha	
	SQ2	2.5ha	
	SQ3	2.2ha	(0.4ha remaining)
	SQ5	1.4ha	
	Total	7.3ha	

Vol / ha 2016 = 550m³/ha (700m³ estimate ROW volume excluded)

Block	Gross Area	Silviculture System	STATUS	Easting	Northing
SQ 1	1.2	Seed Tree	Engineered	363590	5551058
SQ 2	2.5	Seed Tree	Engineered	363373	5551882
SQ 3	2.6	Seed Tree	Engineered	363414	5551063
SQ 4	3.0	Seed Tree	Engineered	363618	5551399
SQ 5	1.4	Seed Tree	Engineered	363309	5552041
SQ 6	12.5	Commercial Thin	Engineered	363502	5551740
	23.2				



2016 Squirrel Cove – Community Consultation

Squirrel Cove Engineering

Summer 2015 – Matt with Ruby Carrico and Zoltan Mityok (UBC Summer Students)

Discussed at Community Mtg – November 28, 2015

Field Tours

Oct 19, 2015

CFGP Executive Directors

Dec 11, 2015

Tour with Sabina and Sherman

Jan 3, 2016

Data Collection/ meet with Tor and Peter

Schmidt

Jan 9, 2016

Contactors (Vosper, Buttle Lake, Schmidt,

Jan 16, 2016

Squirrel Cove Residents tour (6 residents)

Jan 18, 2016 (*)

Squirrel Cove Residents tour (5 residents)

January 22, 2016 – Harvest Commenced at Squirrel Cove Project

2016 Squirrel Cove – Challenges – Solutions

Harvest Timing

- Harvests at the Cortes Community Forest (CCF) have both occurred in early spring based on
 - nesting bird impacts
 - Riparian habitat impacts
 - Fire danger
 - Objective to avoid operations during busy summer months

Concern with operations during higher water table and high rainfall

- Higher roads costs
- Higher risk of siltation, etc.
- Soil impacts with ground based machinery
- SQ4
 - Originally 13.6ha
 - Reduced to 4.0 due to soil moisture concerns
 - Decision to exclude SQ4 from 2016 program
 - High water table
 - Harvest was taking longer than planned
 - Road building delays
 - Target volume attainable without SQ4

Objective to road build / develop access during drier months (fall) to improve spring harvest program.

2016 Cortes Community Forest – Firewood Program

Managed by Matt Cuscianna

2017 Firewood program based on 3 distinct phases

- Commercial – Logging Truck / flat deck
 - Delivery of short log (20' approximately) for customer processing (bucking / splitting)
- Commercial – onsite commercial firewood processing / delivery
 - Commercial cutters onsite at Squirrel processing firewood
- Personal Use
 - Permits will be issued for personal use

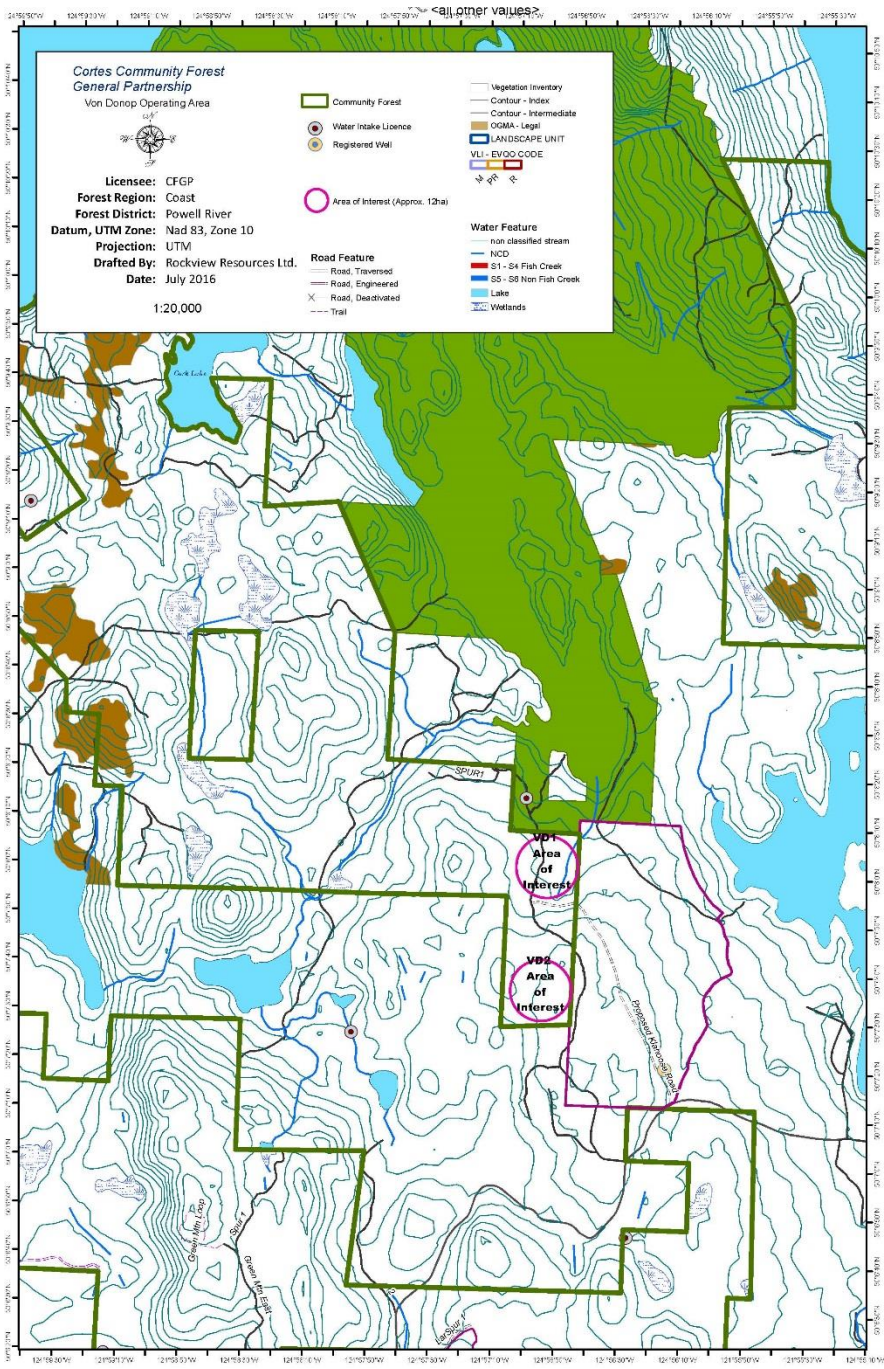
Cortes Community Forest – Fall 2016 / Spring 2017

The 2017 operating plan will focus on long-term planning and access development. Broad Objectives include

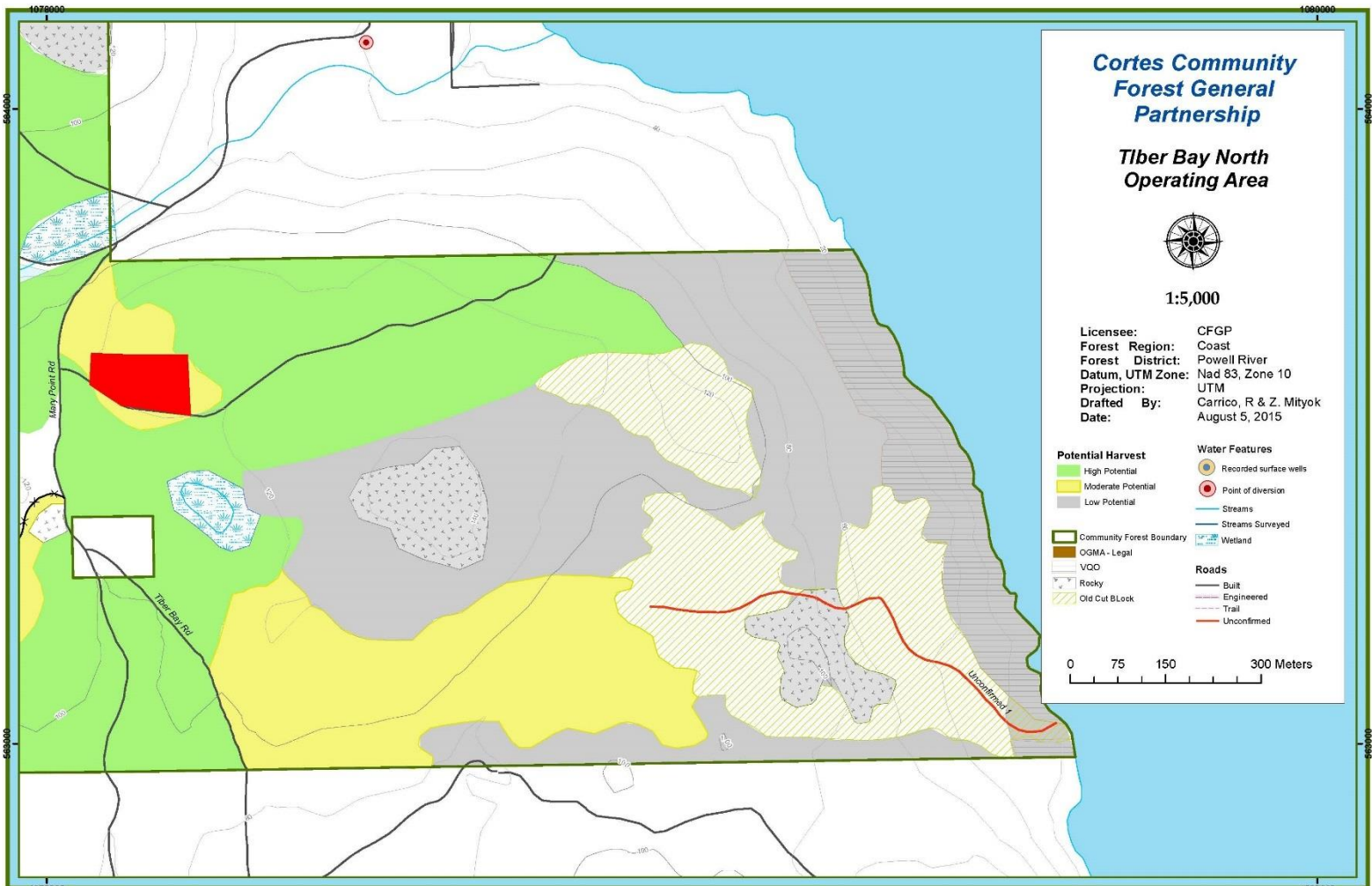
- Access Development
- Possible support of local “Community Forest Commercial Centre’ initiative
- Cooperative access development with Klahoose Schedule A (private) Woodlot Licence
- Individual Tree Selection (ITS) program
- Possible ‘Wood Store’ harvest subject to demand

Current Plans Include

- Klahoose Road / Von Donop Access
- Completion of Squirrel Cove Road and block SQ3
 - Possible development of gravel source
- Mary Point ITS Program
- Von Donop cutblocks VD1, VD2
- Woodstore sales
 - Possible minor Cw sales – Larsen’s, Squirrel SQ4



Proposed CF Business Centre / Mary Point ITS Program



Cortez Community Forest

Pre-Harvest Map - Squirrel Cove

License: CFGP
Forest Region: Coast
Forest District: Powell River
Datum, UTM Zone: Nad 83, Zone 10
Projection: UTM
Drafted By: Rockyview Resources Ltd.
Date: May 07, 2015

Community Forest

- Community Forest
- Block, Existing
- Proposed CT
- Proposed
- Reserve

Water Feature

- NCD
- S1 - S4 Fish Creek
- S5 - S6 Non Fish Creek
- Lake
- Wetlands

Ecological Classification

- Standard Association
- SU1
- SU2
- PAS
- Other
- Other
- Other

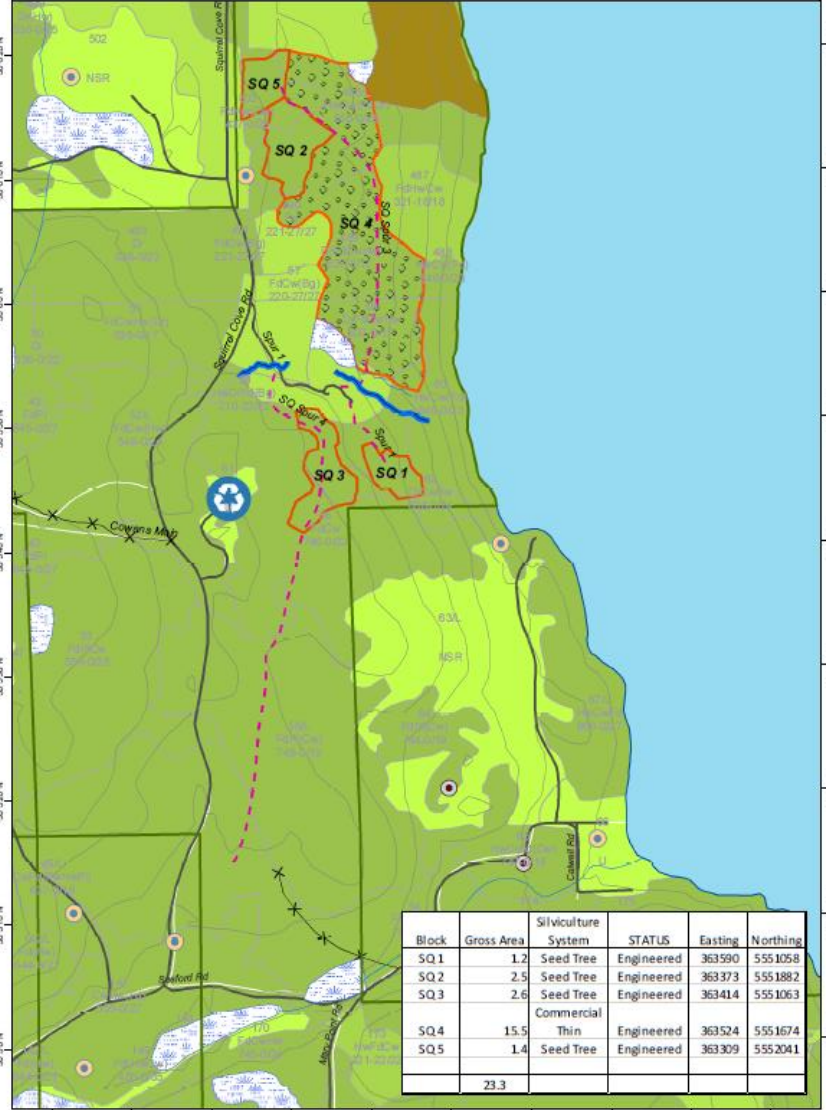
Resource Feature

- Vegetation Inventory
- Contour - Index
- Contour - Intermediate
- OGMA - Legal
- LANDSCAPE UNIT
- WU - ENVCO CODE

Road Feature

- Road, Active
- Road, Engineered
- Road, Decomposed
- Trail

1:10,000



**Cortes Community
Forest General Partnership**
Operation Plan Map

Legend

Roads

- Paved
- Lanesurface
- Fore Roads
- Utilities

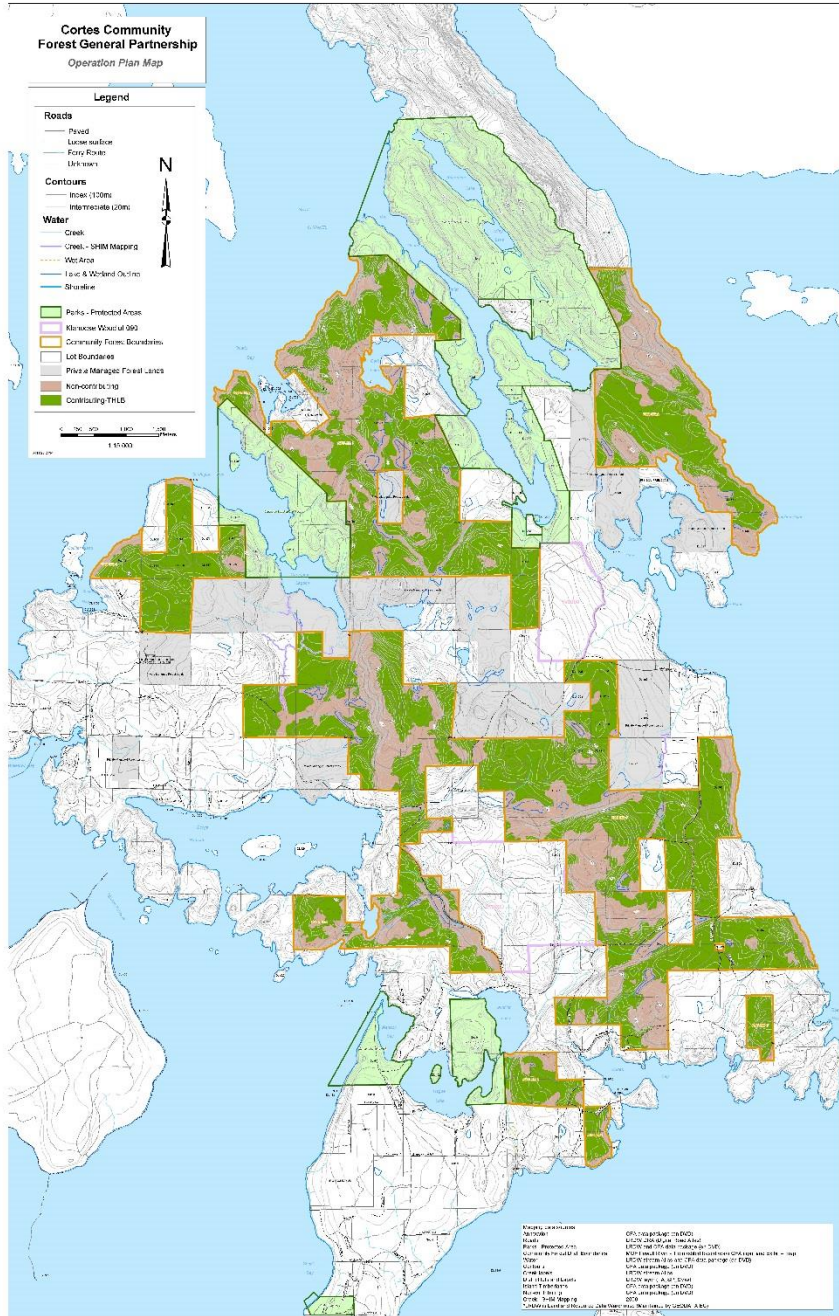
Contours

- 100ft (30m)
- Intermediate (10m)

Water

- Creek
- Creek - SHMM Mapping
- Wet Area
- Lake & Wetland Outlines
- Shoreline

- █ Parks - Protected Areas
- █ Municipal Watershed
- █ Community Forest Boundaries
- █ Lot Boundaries
- █ Forest Managed to meet Lanes
- █ Nonwooded lands
- █ Converting THLD



Project Location: Cortes Community Forest
 Project: Operation Plan Map
 Date: 10/15/2010
 Prepared by: [Name]
 Checked by: [Name]
 Approved by: [Name]
 Project Manager: [Name]
 Project Engineer: [Name]
 Project Surveyor: [Name]
 Project Designer: [Name]
 Project Checker: [Name]
 Project Approver: [Name]